

» Ultrapure Water

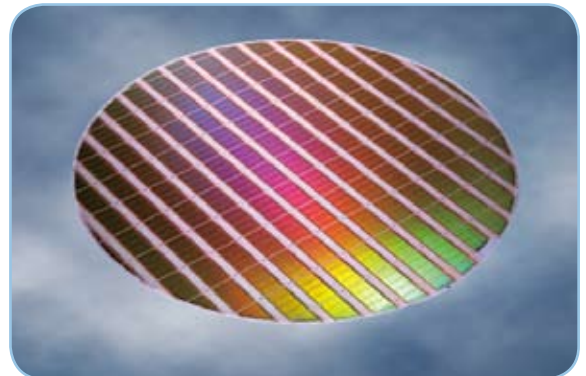


Samsung Electronics

Hwasung, South Korea

Plant Information

- APPLICATION Ultra Pure Water for Semiconductor
- PERMEATE CAPACITY 108,000 m³/day
- PRETREATMENT A/C › WC/SC › D/G
- RO MEMBRANE TYPE Ultra Pure Water RO Membrane
- RO MEMBRANE MODEL **RE8040-UR** (1st RO), **RE8040-UL** (2nd RO)
- RO SYSTEM ARRAY 1st Array 11:5:2, 2nd Array 8:3:1 (Double pass, 4 elements per pressure vessel)
- OEM Nomura
- MISC HERO System, Operating pH is over 10



General Information

The Hwasung Plant is one of the newest plants by Samsung Electronics. Samsung has reported high performance levels of CSM UPW (Ultrapure Water) Membrane.

Technical Information

After 8 hours from changing to CSM elements, the TOC level stabilized to less than 10 ppb.

