

» Wastewater / Sewage Water Reclamation



Kranji Water Reclamation Plant

Kranji, Singapore

Plant Information

- APPLICATION Secondary Effluent Reclamation
- PERMEATE CAPACITY 72.0 MLD (19.0 MGD)
- PRETREATMENT Pressurized micro-filtration system
- RO MEMBRANE TYPE Fouling Resistant RO Membrane
- RO MEMBRANE MODEL **RE8040-FE**
- RO SYSTEM ARRAY Phase 2: 49:24 (Single pass, 2 array, 7 elements per pressure vessel)
Phase 2 extension: 78:40 (Single pass, 2 array, 7 elements per pressure vessel)
- SYSTEM RECOVERY 75%
- CLIENT PUB (Public Utilities Board)
- OEM Veolia Water Solution & Technologies
- WARRANTY PERIOD 5 years



General Information

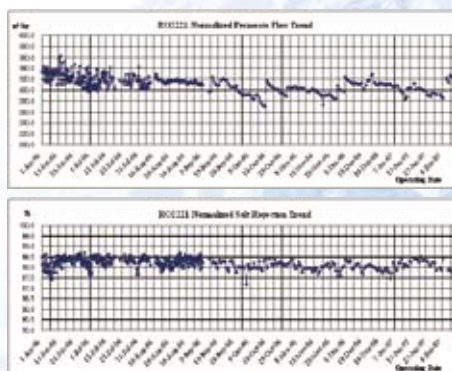
The NEWater Factories at Bedok and Kranji Water Reclamation Plants operated by PUB were commissioned at the end of 2002. Since February 2003, NEWater has supplied water to wafer fabrication plants at Woodlands and Tampines/Pasir Ris and to other plants for industrial applications. Total permeate capacity at the Kranji Water Reclamation Plant including RO phase 1 and 2 was extended to 19 MGD in August 07.

The Singapore government intends to supplement up to 2.5% of drinking water from NEWater plants by 2011.

Technical Information

Due to differences in the 1st stage recovery ratio calculated by the permeate flow-rate and conductivities of each train, the 2nd stage differential pressures from each train yielded different results. After calibrating the flow-meter in the 1st stage of each train, the 2 RO trains displayed identical performance readings.

RO2221 train



RO2222 train

