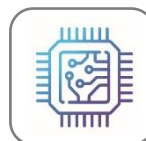


RE4021-BLR



Low pressure grade RO element for brackish water

- Low-Energy Consumption
- High Permeate Flow and High Rejection



Semiconductor



Industrial



Municipal

SPECIFICATIONS

General Features

| | |
|--------------------------------|---|
| Permeate Flow Rate | 1,000 GPD (3.8 m ³ /day) |
| Nominal Salt Rejection | 99.4% (Minimum 99.0%) |
| Effective Membrane Area | 35ft ² (3.3 m ²) |
| Membrane Type | Thin-Film Composite |
| Membrane Material | Polyamide (PA) |
| Element Configuration | Spiral-Wound, FRP Wrapping |

Test Conditions: 1,500 mg/L NaCl solution at 150 psig (1.03 MPa) applied pressure; 8% recovery; 77°F(25°C); pH 6.5–7.0; Permeate flow rate for each element may vary but will be no more than -5 %.

Dimensions and Weight

| Model Name | A | B | C | D/E | Part Number | |
|------------|-------------------------|-----------------------|------------------------|------------------------|-----------------|------------|
| | | | | | Inter-Connector | Brine Seal |
| RE4021-BLR | 21.0 inch (533.4 mm) | 3.9 inch (99.0 mm) | 0.75 inch (19.1 mm) | 1.05 inch (26.7 mm) | SWA01050 | SWA01046 |



1. Each membrane element supplied with one interconnector (coupler) and four O-rings.
2. All RE4021 elements fit nominal 4.0 inch (101.6 mm) I.D. pressure vessels.

Toray Advanced Materials Korea Inc.

For more information on our products, company and regional contacts, please visit our website at www.csmfilter.com.
Product Specification Sheet / Model RE4021-BLR

V.2.0 (22)

RE4021-BLR



Low pressure grade RO element for brackish water

APPLICATION DATA

Operating Limits

| | |
|---|----------------------------------|
| Max. Pressure Drop / Element | 15 psi (0.10 MPa) |
| Max. Pressure Drop / 240" Vessel | 60 psi (0.41 MPa) |
| Max. Operating Pressure | 600 psi (4.14 MPa) |
| Max. Feed Flow Rate | 18 gpm (4.09 m ³ /hr) |
| Min. Concentrate Flow Rate | 4 gpm (0.91 m ³ /hr) |
| Max. Operating Temperature | 113°F (45°C) |
| Operating pH Range | 2.0 – 11.0 |
| CIP pH Range | 1.0 – 13.0 |
| Max. Turbidity | 1.0 NTU |
| Max. SDI (15 min) | 5.0 |
| Max. Chlorine Concentration | < 0.05 mg/L |

GENERAL HANDLING PROCEDURES

- Elements contained in the boxes must be kept dry at room temperature (7–32°C; 40–95°F) and should not be stored in direct sunlight.
- For WET-TYPE, the preservative solution (1% sodium metabisulfite solution) is added to prohibit the growth of micro-organisms.
- Permeate from the first hour of operation should be discarded.
- Stabilized salt rejection is generally achieved within 1~48 hours of continuous use.
- Keep elements moist at all times after initial wetting.
- Avoid excessive pressure and flow spikes.
- Only use chemicals compatible with the membrane elements and components. Use of such chemicals may void the element limited warranty.
- Permeate pressure must always be equal or less than the feed/concentrate pressure. Damage caused by permeate back pressure voids the element limited warranty.
- The element shell is FRP(Fiber Reinforced Plastic). Be aware of glass fiber strands and use safety equipment.

Toray Advanced Materials Korea Inc.

For more information on our products, company and regional contacts, please visit our website at www.csmfilter.com.
Product Specification Sheet / Model RE4021-BLR

V.2.0 (22)